

SEMI-AUTOMATIC CRITICAL POINT DRYER

SAMDRI®-795



tousimis

The Semi-Automatic **SAMDRI®-795** provides solid-state circuitry and simple push button operation. The **SAMDRI®-795** utilizes many presets and internal controls, yielding precise and reproducible process results. Operator ease via Semi-Automatic process control defines the Semi-Automatic **SAMDRI®-795**.

Samdri®-795

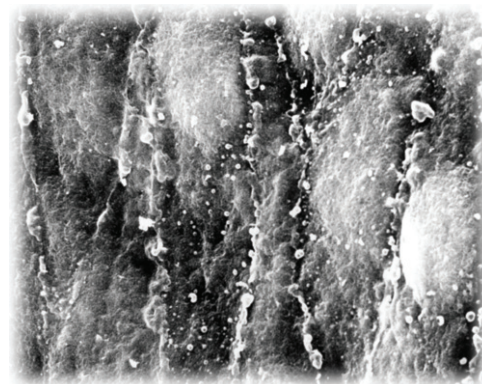
(THE SEMI-AUTOMATIC CRITICAL POINT DRYER)

Catalog # 8778B



FEATURES

- Simple Semi-Automatic push-button Operation.
- LEDs signal every process mode of operation at a glance.
- Excellent choice for multi-user sites.
- Precise flow control via Micro Metering valves.
- Vernier handles on metering valves enable reproducible flow settings.
- EZ top loading process chamber.
- Under-lit chamber with view port enables visualization of chamber status.
- Internal 0.5µm particulate filtration* protect samples and valves.
- Internal surfaces inert to LCO₂ and ultra-pure alcohols.
- Tough, solvent resistant cabinet.
- Automatic critical point temperature - pressure regulation for system safety.
- Fast adiabatic chamber cooling* with CO₂ (<1 minute @ room temperature).
- All electronic and other components meet UL, CE and/or U.S. Military Specifications.
- Optional SOTER™ Condenser* may be attached to capture waste alcohol and eliminate PURGE exhaust noise.



SEM of the internal surface of the carotid (human) artery. This samdried (critical point dried) sample shows not only surface membrane details but also endothelial cell boundaries and their nuclei.

SPECIFICATIONS

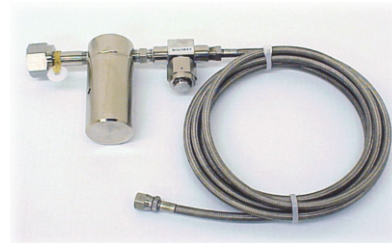
- Cabinet Size : 14.0"(W)x 10.25"(H) x 21.5"(L)
35.6cm(W) x 26.0cm(H) x 54.6cm (L)
- System Set-Up Area Requirement: 20"(W) x 30"(D)
51cm(W) x 76cm(D)
- Process Chamber size: 1.25" I.D. x 1.25" Depth
- Temperature gauge range: -30°C to 60°C
- Pressure gauge range: 0 to 2,000 psi.
- 120V / 50-60Hz (Other voltage units also available - Please inquire).



Optional SOTER™ Condenser* (Cat# 8777)
Quietly captures exhaust alcohol.

STANDARD ACCESSORIES

- Flexible High-Pressure braided stainless steel inert Teflon® lined LCO₂ Supply Hose, 5ft (approximate 1.5m) long.
- External LCO₂ filtration system (#8784) removes water/oil and particulates down to 0.5µm. Filter Housing (#8784) is conveniently pre-installed onto your LCO₂ High Pressure Hose.
- Static free exhaust tubing for the PURGE/VENT/BLEED and COOL exhaust outlets.
- Flow Meter supplied allows precise periodic BLEED exhaust rate flow control.
- Spare chamber O-ring (2), chamber lamps (2), and 5A slo-blow fuses (2).
- User Manual and Check-Out Data Sheet.
- 2 year warranty on all parts and labor.
- Free lifetime technical support.



LCO2 Filter Housing (#8784)
installed onto High Pressure Hose

Visit our web site at www.tousimis.com or contact us about the various sample holders.

* U.S. patented (# 6,493,964) or patent pending.

Note: Actual delivered model or accessories may vary slightly, as advancements are being constantly applied.